
Lot 21

Nevada Park Ridge



Lot 21

Nevada Road

Park Ridge QLD

Logan QLD

Located in one of South East Queensland's fastest growing communities, Nevada Park Ridge is an idyllic new family address, with 80 larger than average homesites on offer. This truly rare parcel combines the best of both worlds, blending total convenience with sheer tranquillity. With Brisbane and the Gold Coast easily accessible from Mount Lindesay Highway or the Logan Motorway, you'll be surrounded by amenity, including quality schools, shops, and transport, with new developments and infrastructure already underway to further enrich this growing suburb.

Connected by lush green spaces and unspoilt bushland, this natural reserve of north facing blocks is the perfect opportunity to build your dream home. When you choose Nevada, you'll become part of a wonderful new community.

\$492,900

Land Price: \$230,000.00

House Price: \$262,900.00

House & Land

4 bedroom

2 bathroom

2 car

Living: 147.96 m²

Alfresco: 12.61 m²

Porch: 2.80 m²

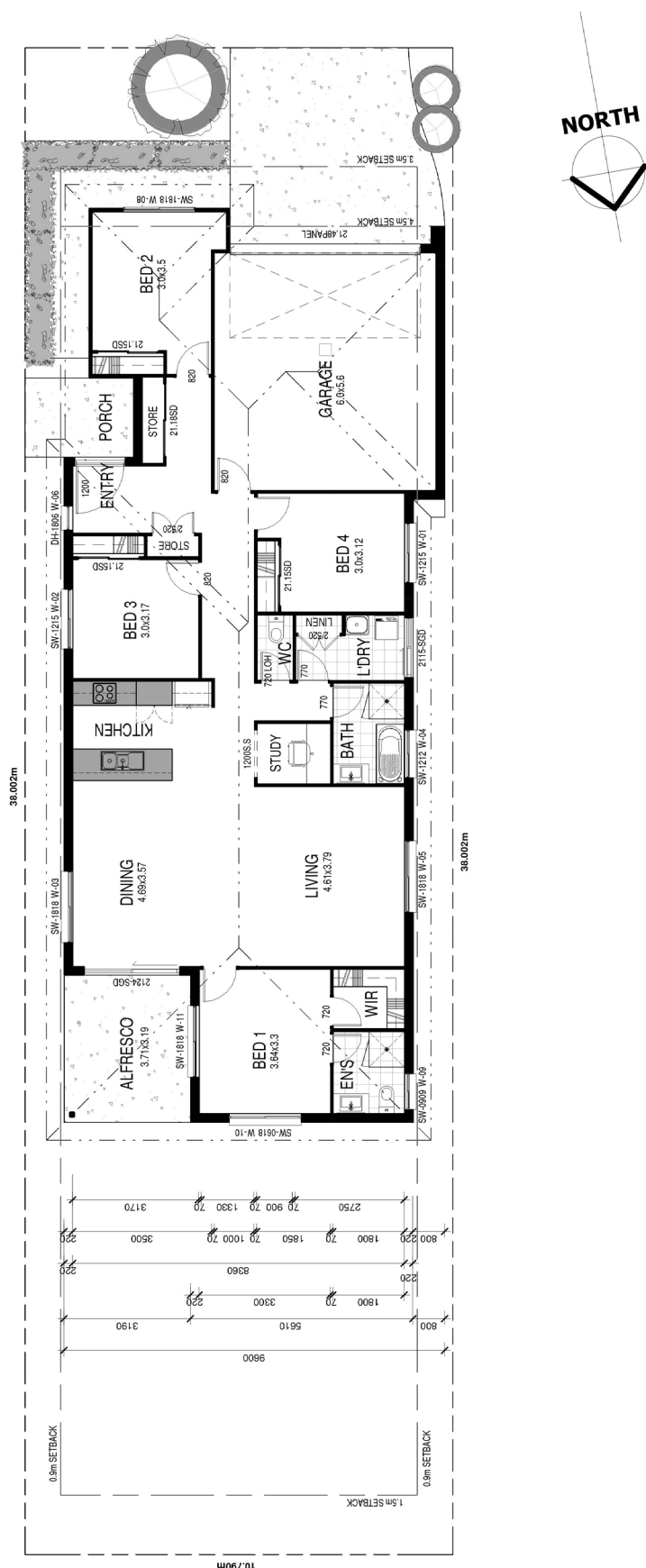
Garage: 36.72 m²

Gross Floor Area: 200.08 m²

Land Area: 410 m²

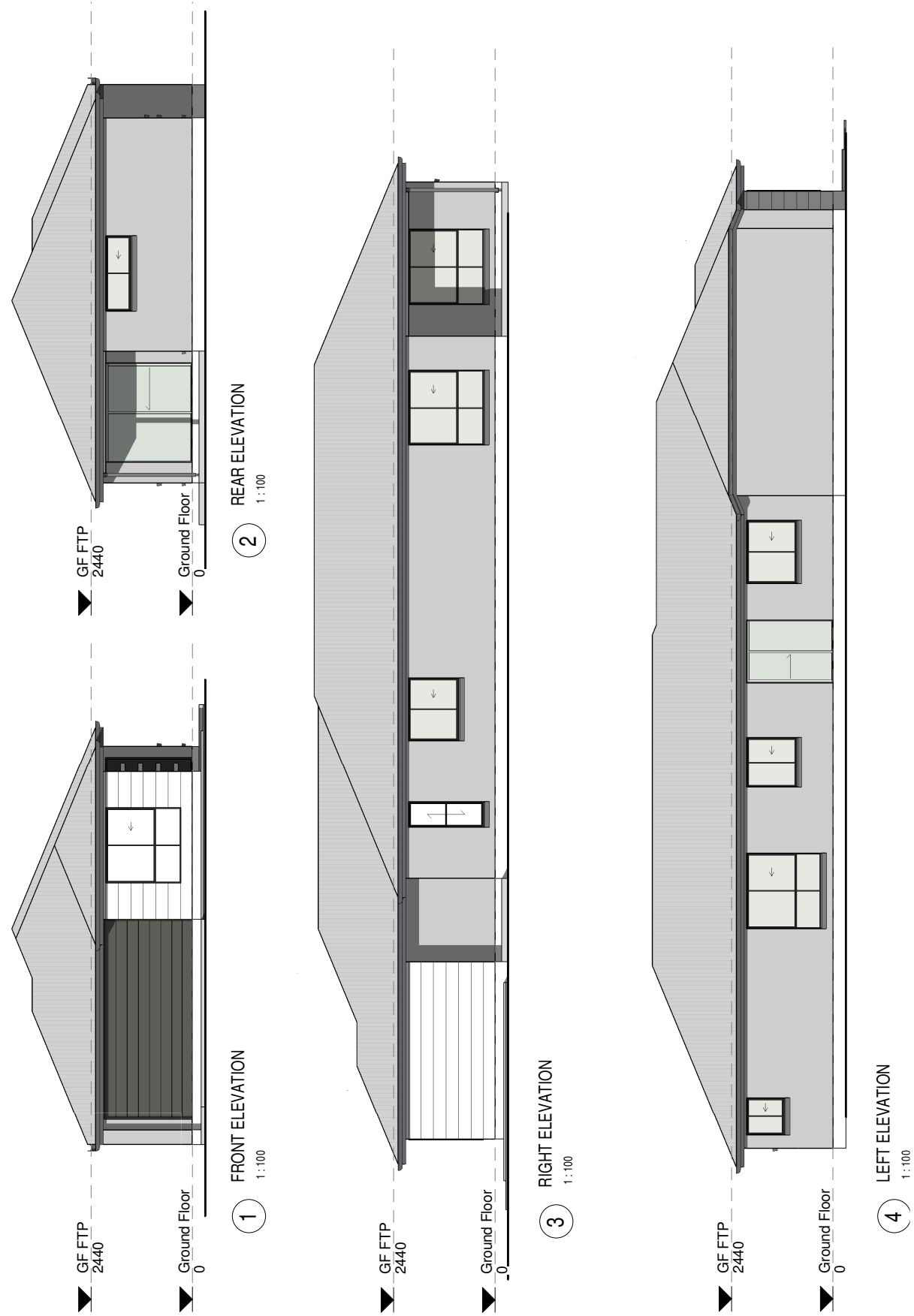
Width: 10.790 m

Length: 38.002 m



Disclaimer: Not actual images of home, images are indicative only. Plan not to scale, furniture not included. Parties should note that while all reasonable care has been taken in the preparation of this material, the information is of a preliminary nature only, and is subject to change at any time. Photographs and artists impressions are illustrative only and all information is correct at time of publication. Catapult Property Group as vendor, its partners, its contractors, and its appointed marketing agents and other related parties disclaim all liability should any information or matter in this material differ from the contract of sale or the actual constructed development

Plan Elevations



Disclosure Plan

